

IrisAccess® SoHo

Stand-alone Iris Recognition Platform



Touch screen
Panel PC

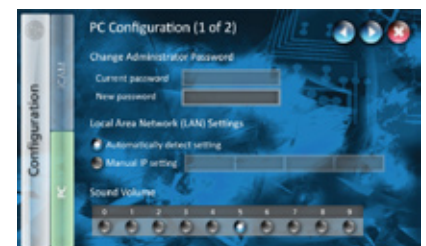
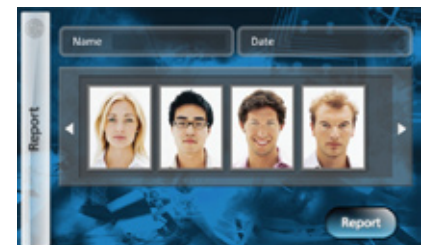
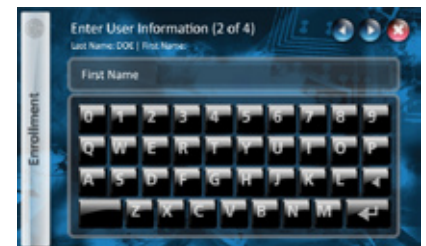
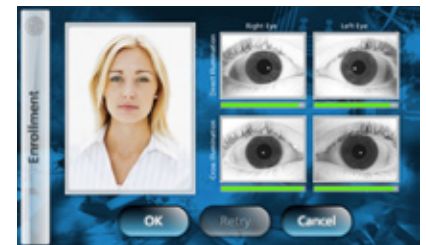
iCAM4000

- Convenient "non-contact" IrisAccess® solution
- Easy-to-use, fast, accurate and secure
- Touch screen Panel PC included
- Stand-alone or up to four recognition points
- Flexible authentication options: Iris, Card *
- Downloadable transaction and history report

LG Iris Technology has been the key developer and driver of the commercialization of iris recognition technology. LG IrisAccess®, now in its third generation, is the world's leading deployed iris recognition platform. LG's biometric solutions, enabling non-contact and highly accurate identification by the iris of the eye, deliver security, convenience, privacy and productivity to millions around the world. The LG IrisAccess® platform identifies more people in more places than all other iris recognition products combined.

LG's IrisAccess® 4000 solution is versatile and flexible providing easy integration and expansion. Enrollment and recognition are also easier than ever. An intuitive user interface, with visual and audible prompts, enables users to be quickly enrolled and identified. Dual iris capture and a power, auto-tilt mechanism increases speed and convenience by adjusting for height with one simple touch.

Combining LG's IrisAccess® 4000 and the new iData™ SoHo software solution from LG's suite of identity access control applications provides a simple, flexible and robust solution for any environment.



LG iData™ SoHo Features

- Enrollment:** LG iData SoHo provides the system administrator with a flexible and simple user interface to enroll individuals in the database.
- Setup:** LG iData SoHo provides a simple configuration solution as the system has the ability to configure itself via DHCP. Alternatively, the system provides the option to set static IP addresses. The administrator can also control a relay to activate a door strike and reset permissions.
- Reporting:** LG iData SoHo is designed to identify individuals as their biometric is presented. Transactions are stored in the system log and can be accessed by the system administrator for download, review and printing.

* Multiple options for single factor authentication. Iris or external card reader.

System Configuration

iCAM4000 (IrisCamera)

Dimensions (W x H x D)	8.6" x 6.5" x 3.2" (218mm x 164mm x 80mm)
Weight	4.4lbs (2kg)
Power Input	12VDC, 1.5A
Power Consumption	40W
LED Indication	Power (blue), Operating Range (green), Out of Range (orange), Accept (green blink), Reject (orange blink)
Voice Indication	Flexible Voice Message (English: standard, Other Language: downloading available)
Operating Range	10.2" ~ 14.2" (26cm ~ 36cm)
Operating Temperature	32°F ~ 104°F (0°C ~ 40°C)
Storage Temperature	-4°F ~ 140°F (-20°C ~ 60°C)
Humidity	0% to 90% Non-condensing
Rotation Angle	+35°/-25°

Interface

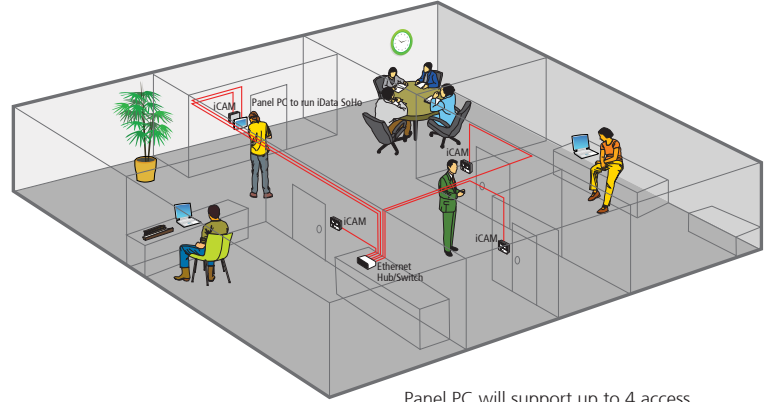
- Ethernet
- External ProxCard Reader or Pin Pad (Wiegand)

Equipment supplied with iCAM4000

- AC Power Cable
- AC Power Adapter
- Straight Ethernet Cable

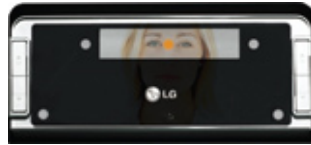
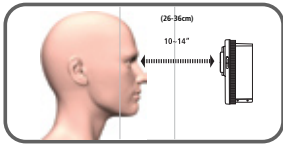
Panel PC

LCD Size	7"	Net Weight	1.32lb (0.6kg)
Max Resolution	800x480	Touch Screen	Yes
Mounting	Wall bracket	Power Requirement	12VDC
Dimension (WxHxD)	8.9" x 5.5" x 1.6" (226mm x 140mm x 41mm)	Power Consumption	20W
Operation Temperature	32°F ~ 122°F (0°C ~ 50°C)	Included Power Supply	Input: 90~264VAC at 50/60Hz Output: 12VDC
Storing Temperature	-4°F ~ 142°F (-20°C ~ 61°C)	Contrast Ratio	400:1



Panel PC will support up to 4 access points with iData SoHo. Set up, configuration and integration are simple into an existing Ethernet infrastructure.

User Interface

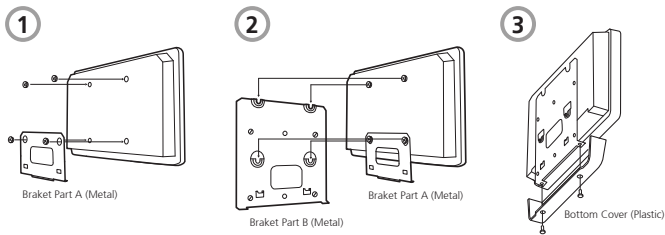


- Green dot = In range
- Orange dot = Out of range

- iCAM activates when user approaches.
- Picture capture range is 10-14 inches (26-36cm) away.
- Self or auto/set height adjustment.
- Placing dot over the bridge of nose, easily helps alignment.

- Orange ● turns to green ● when user is at correct distance.
- Visual indication is amplified with friendly audio prompts.
- Right and left irides are acquired.
- A face picture can also be captured.

Mounting Bracket for Panel PC



Installation and Dimension

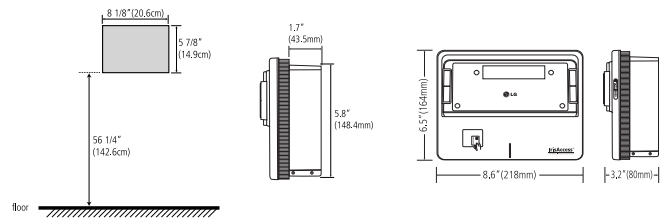


Illustration of mounting prep depth requirements with flush mount to wall. Recess mount kit available for iCAM4000 - Order iCAM-RM Mount kit.

Eye Safety

LG's heritage as a designer and manufacturer of high quality consumer electronic products is reflected in the utility, intuitiveness, human factors engineering and concern for safety that is part of the LG design and innovation process in iris recognition. The LG IrisAccess cameras meet or exceed US and international electrical code requirements. The optics and subtle illumination produced by LG IrisAccess has been thoroughly tested and found to fall well within UL, ANSI, and IEC eye safety standards. It has also been independently tested and approved for eye safety by other parties in the public and private sectors.

LG AUTHORIZED RESELLER



LG Electronics U.S.A., Inc.

Iris Technology Division

7 Clarke Drive, Cranbury, NJ 08512, USA
Tel. 609-819-IRIS(4747) Fax. 609-819-4736

www.lgiris.com

©2009 LG Electronics U.S.A., Inc. All trademarks are property of their respective owners. Design and specification subject to change without notice.

